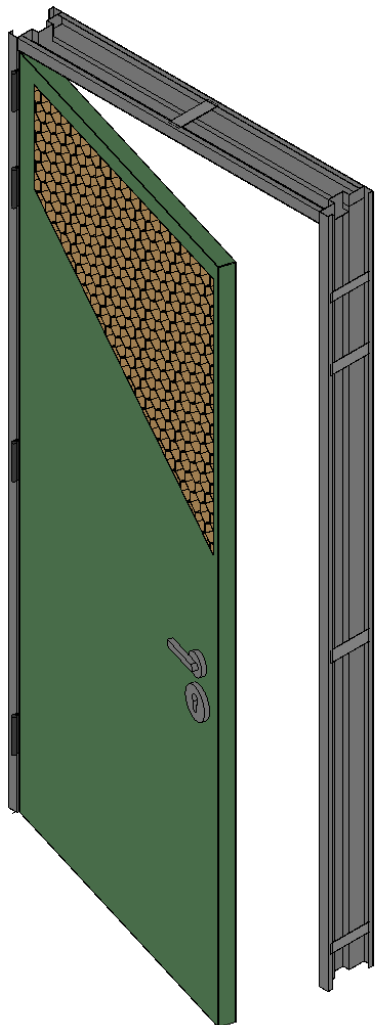


# HONEYLITE

Lightweight 2H Fire Rated Steel Door



**Fire Rating:** Up to 2 hours, under BS 476:Part 22:1987; SS 332:2007; EN1634.

**Panel:** 47mm thick panel, constructed from 1.0-1.5 mm electrogalvanised (zinc-coated) steel skins in a sandwich construction with a honey-comb paper core for strength and rigidity.

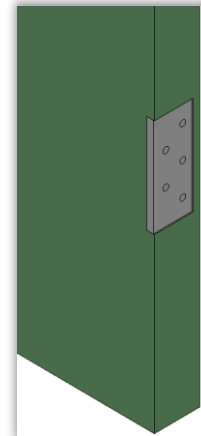
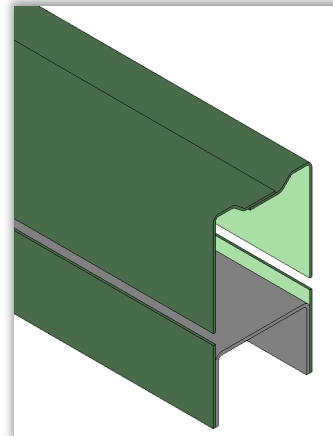
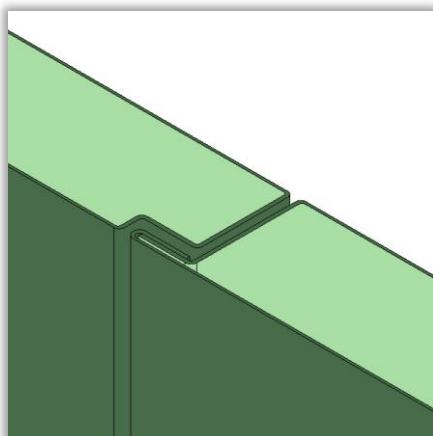
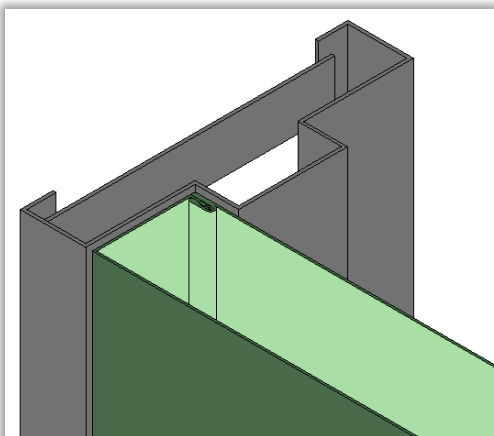
**Frame:** 1.5 mm electrogalvanised (zinc-coated) steel, Single and Double Rebate profiles.

**Hardware:** Extensive selection of ironmongery available, complete with fire test evidence and Certificates of Conformance.

**Finish:** Primer coat only unless otherwise specified.

**Weight:** Leaf ~41kg/m<sup>2</sup>.

**Max. Sizes**  
*Single Leaf* 1,537 x 4,548 mm  
*Double Leaf* 3,074 x 4,548 mm  
Vision Panel 300 x 1750 mm (for 1H FR)  
225 x 1500 mm (for 2H FR)



# HONEYLITE

Lightweight 4H Fire Rated Steel Door



## TACAM STEEL PTE LTD