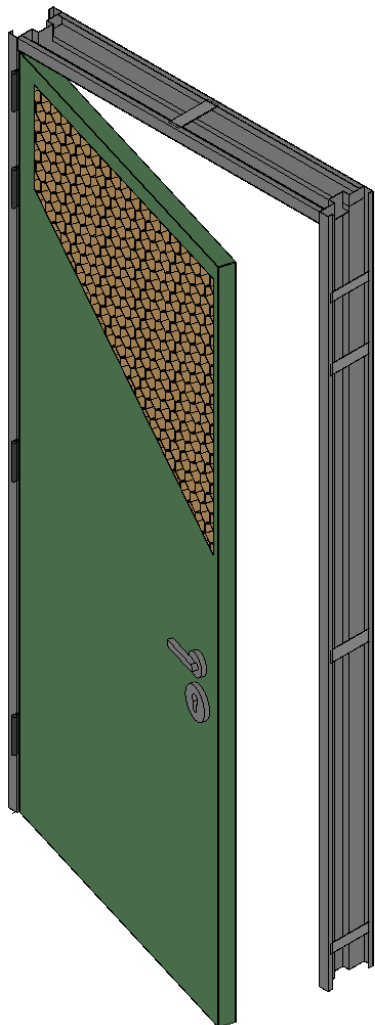


HONEYLITE

Lightweight 2H Fire Rated Steel Door



Fire Rating: Up to 2 hours, under BS 476:Part 22:1987; SS 332:2007; EN1634.

Panel: 47mm thick panel, constructed from 1.0-1.5 mm electrogalvanised (zinc-coated) steel skins in a sandwich construction with a honey-comb paper core for strength and rigidity.

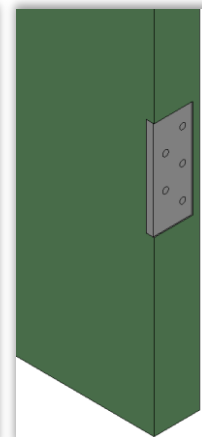
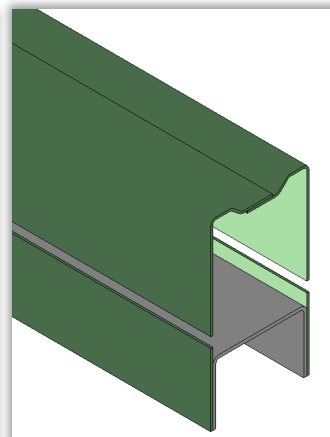
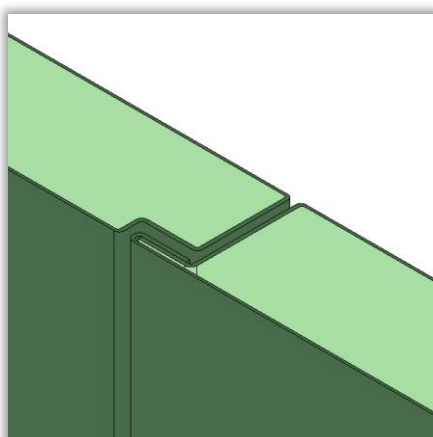
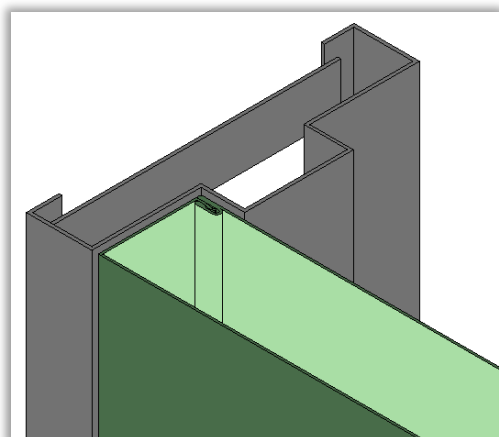
Frame: 1.5 mm electrogalvanised (zinc-coated) steel, Single and Double Rebate profiles.

Hardware: Extensive selection of ironmongery available, complete with fire test evidence and Certificates of Conformance.

Finish: Primer coat only unless otherwise specified.

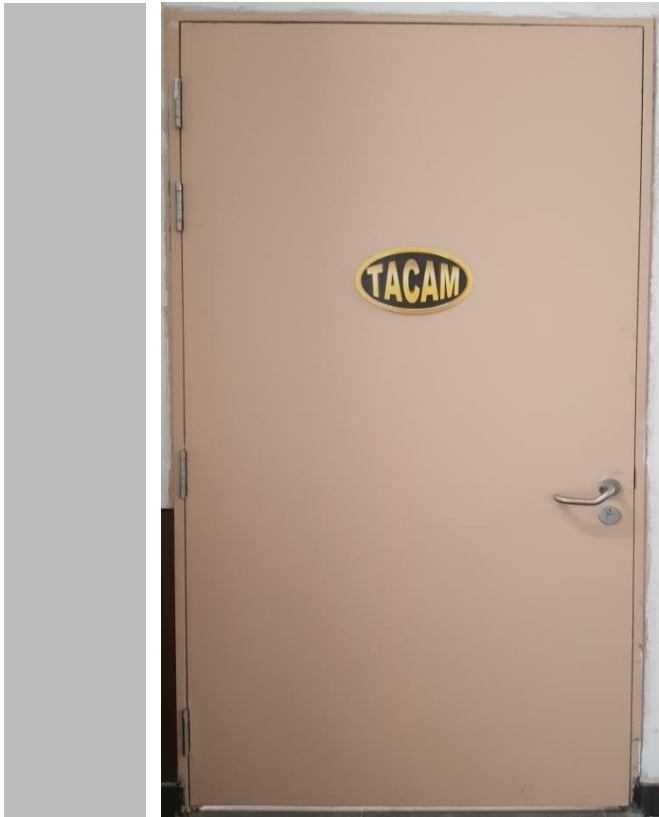
Weight: Leaf ~41kg/m².

Max. Sizes
Single Leaf 1,537 x 4,548 mm
Double Leaf 3,074 x 4,548 mm
Vision Panel 300 x 1750 mm (for 1H FR)
225 x 1500 mm (for 2H FR)



HONEYLITE

Lightweight 4H Fire Rated Steel Door



TACAM STEEL PTE LTD

Singapore: 541 Bt. Batok St 23, #07-00 Tacam Industrial Building, Singapore 659546. Tel +65 6665 7555; www.tacamsteel.com

Malaysia: B15-5 Jalan Selaman 1, Dataran Palma Off Jalan Ampang, 68000 Ampang, Selangor Darul Ehsan, Malaysia. Tel +603 4270 2267; Fax: +603 4270 2269