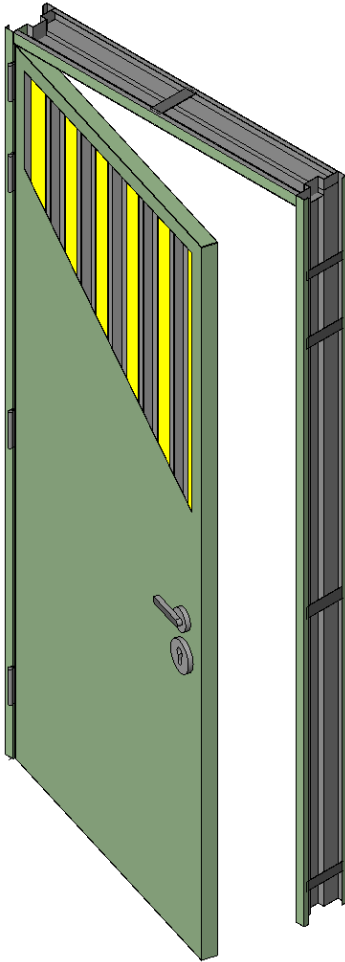


# FIRESTORM

High Strength 4H Fire Rated Steel Door



**Fire Rating:** Up to 4 hours, under BS476: Part 22:1987; SS 332:2007; EN1634. FM Approvals Class:4100

**Doorleaf:** 47 mm door thickness. 1.5 ~ 2.0 mm electro-galvanised steel or 1.0 ~ 2.0 mm stainless steel door,

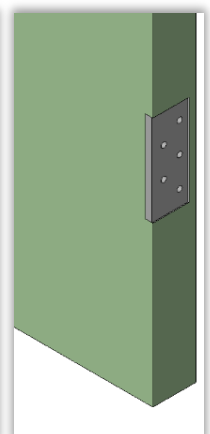
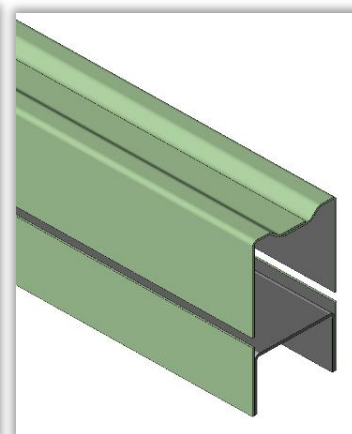
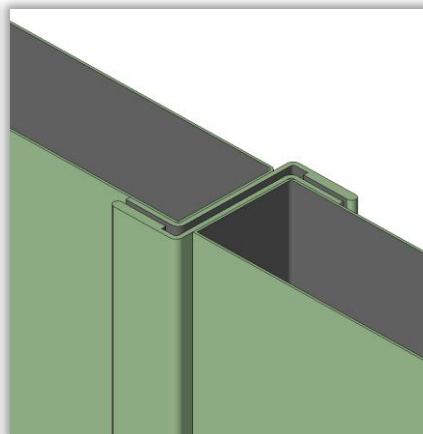
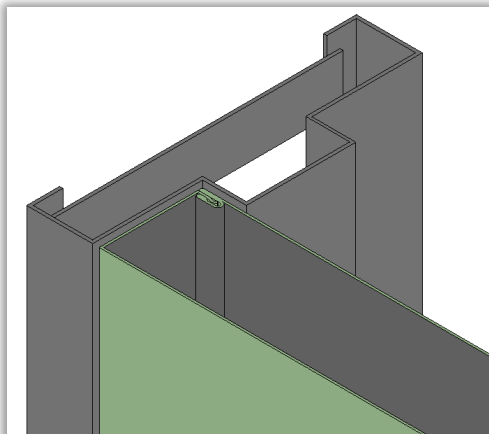
**Frame:** 1.5 ~ 2.0 mm galvanised or stainless steel frames; single or double rebate profile.

**Hardware:** Extensive selection of ironmongery available, complete with fire test evidence and Certificates of Conformance.

**Finish:** Primer coat only unless otherwise specified.

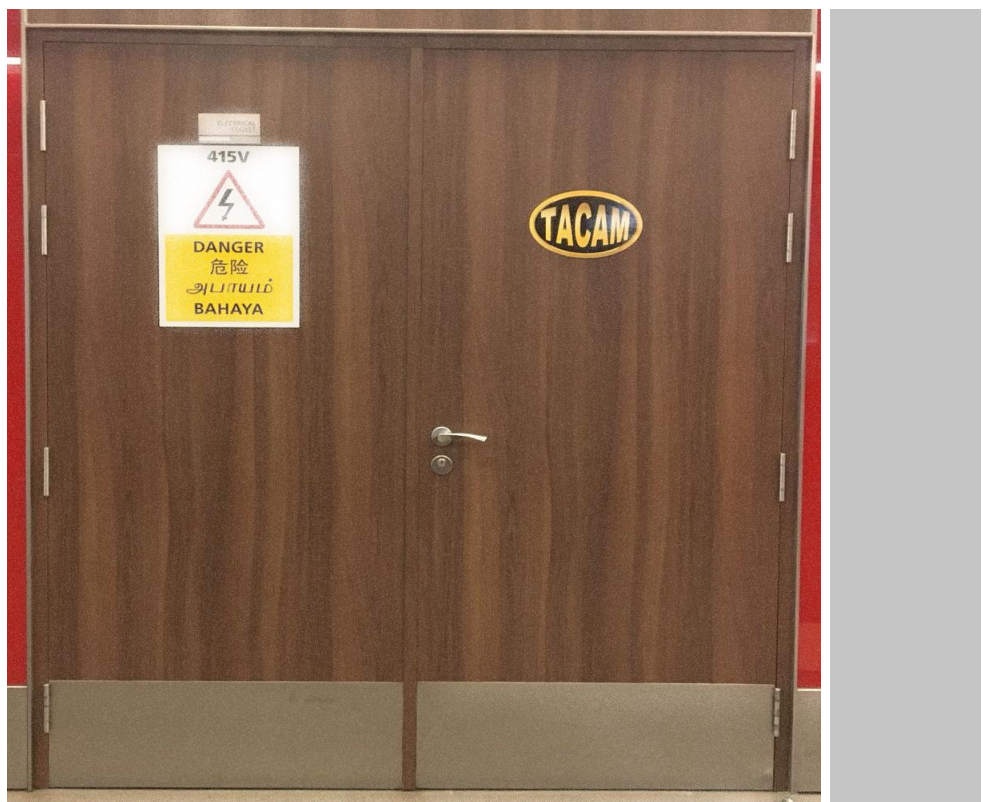
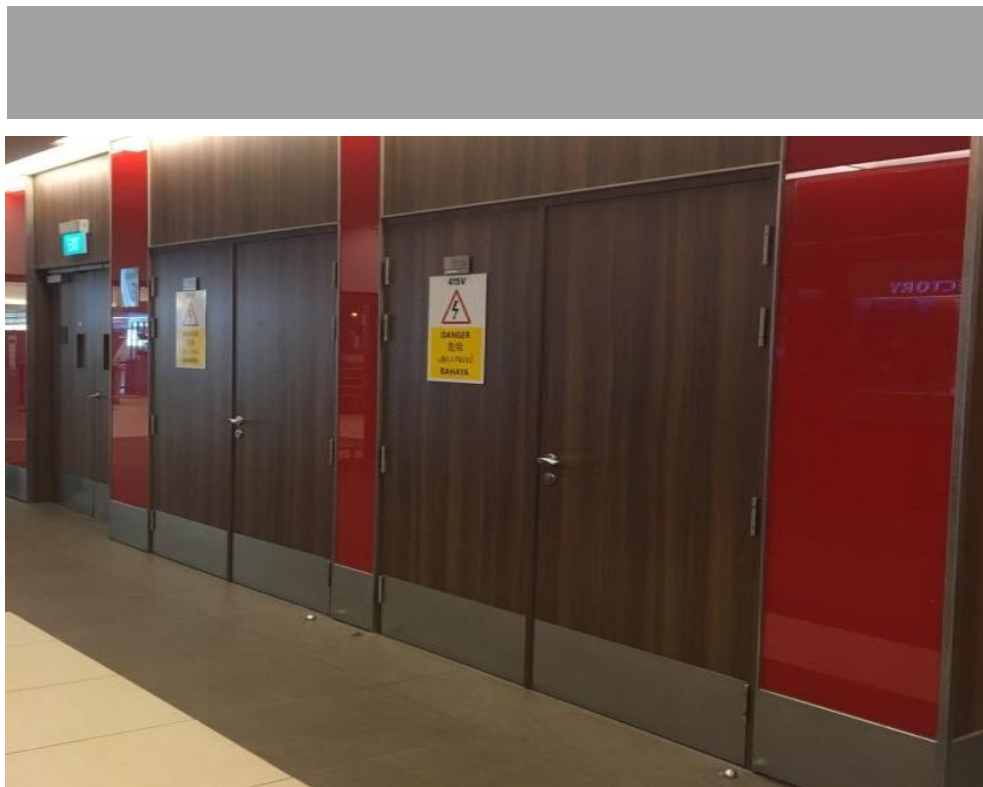
**Weight:** Leaf ~51kg/m<sup>2</sup>

**Max. Sizes:**  
Single Leaf 1,500 x 3,000 mm  
Double Leaf 3,000 x 3,000 mm  
Vision Panel 300 x 1,750mm (for 1H FR)  
225 x 1,500mm (for 2H FR)  
100 x 600mm (for 4H FR)



# FIRESTORM

High Strength 4H Fire Rated Steel Door



## TACAM STEEL PTE LTD